

How to: Check IP Address for DCS-2630L

Step 1: Connect the power of the camera and power on.

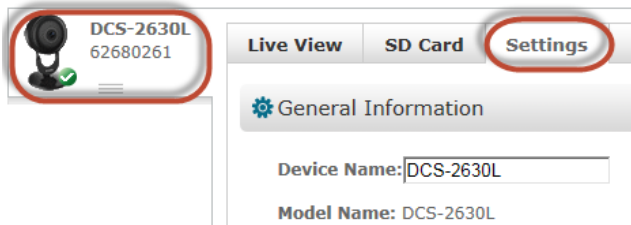
Step 2: Open Internet Explorer and enter **http://sg.mydlink.com**



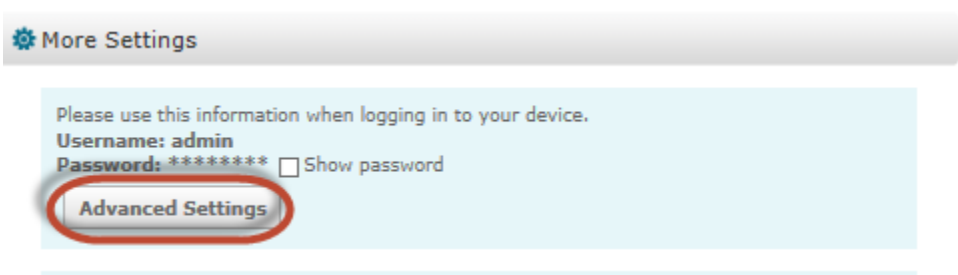
Step 3: Enter mydlink registered **username** and **password**. Click on **Sign In**.



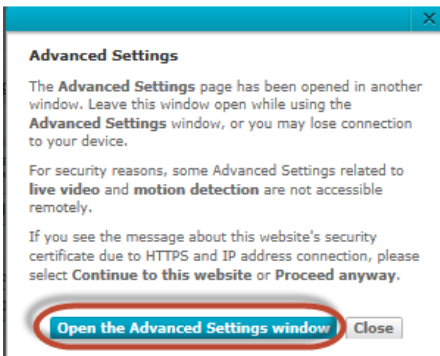
Step 4: Select **DCS-2630L**. Click on **Settings**



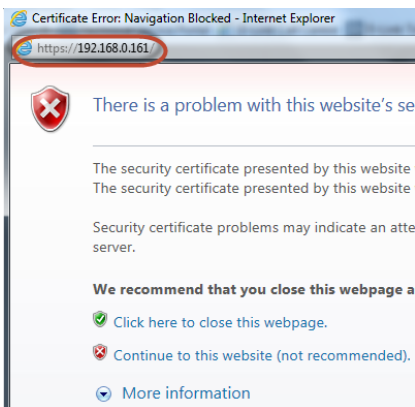
Step 5: Click on **Advanced Settings**.



Step 6: Click on **Open the Advanced Settings window**.



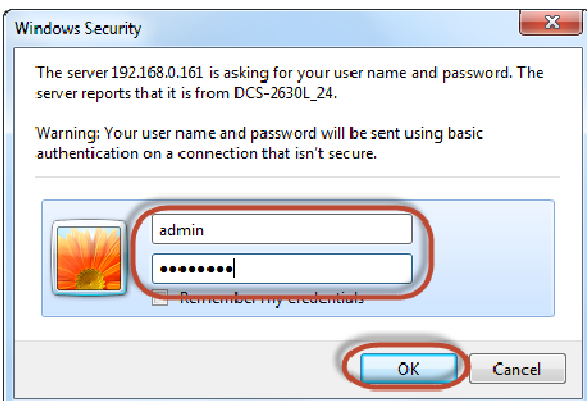
Step 7: Copy down the IP address of the DCS-2630L show in the URL bar.



Step 8: Open Internet Explorer and enter the IP address of the camera that you had copy down on the URL bar.



Step 9: Enter the camera **user name** and **password** that had set during setting up of the camera. Click on **OK**.



--- END ---