

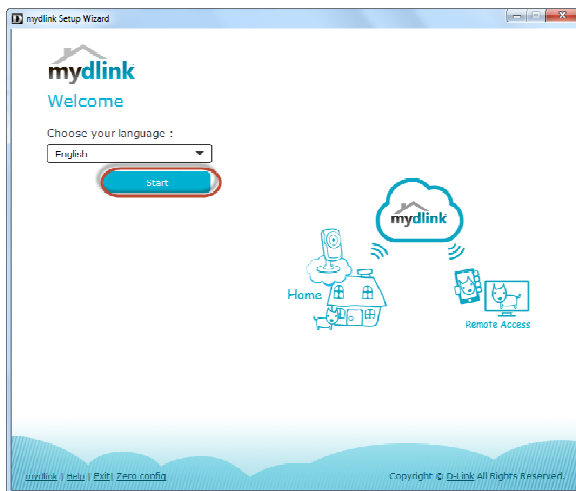
How to: Flip the image on DCS-5030L

Note: Before you follow the guide, go to the link below to download the setup wizard
<https://drive.google.com/file/d/0Byuw6PgvnIBRY0xTYUhnVDdjRnM/view?usp=sharing>

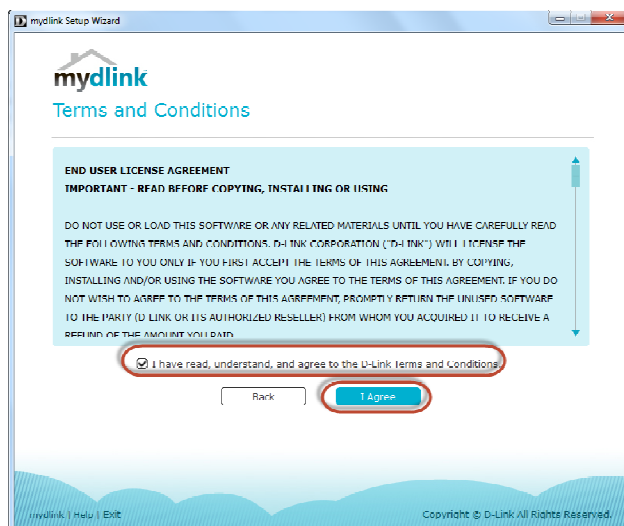
Step 1: Power on your camera and ensure it is connect wire or wirelessly to the router.

Step 2: Open up the setup wizard that you have download

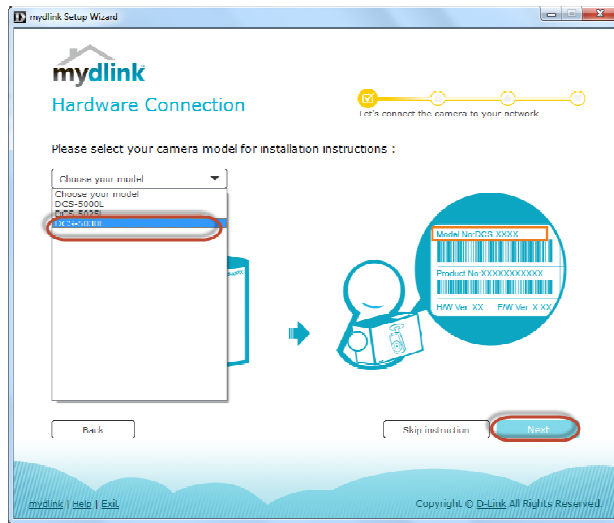
Step 3: Click on **Start**



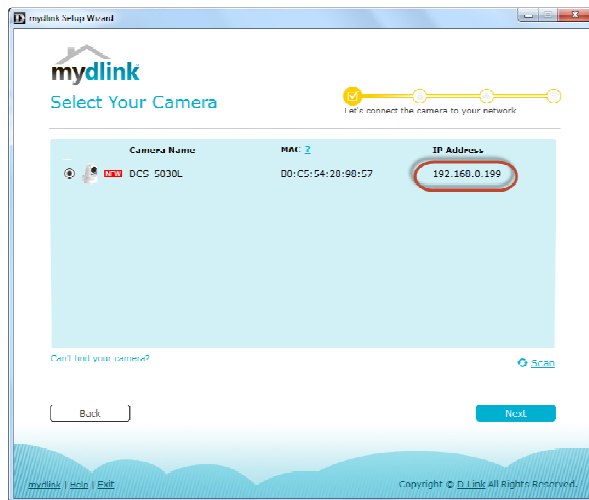
Step 4: Put a **tick** in the box beside 'I accept these terms and conditions.' Click on **I Agree**.



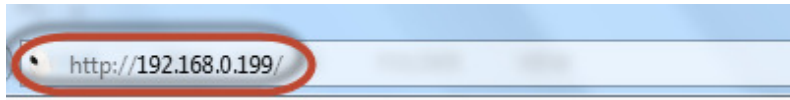
Step 5: Select DCS-5030L and click on Next



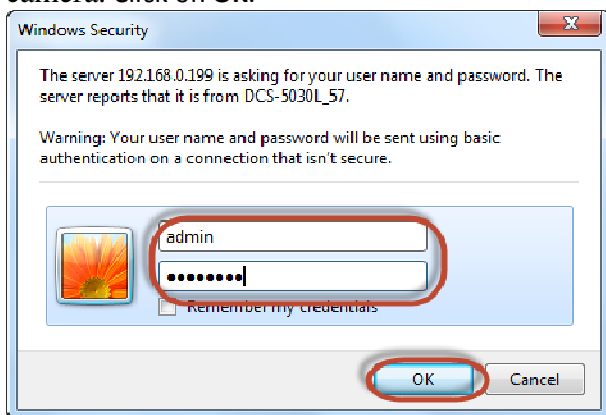
Step 6: Copy down the IP address of the DCS-5030L show in the list.



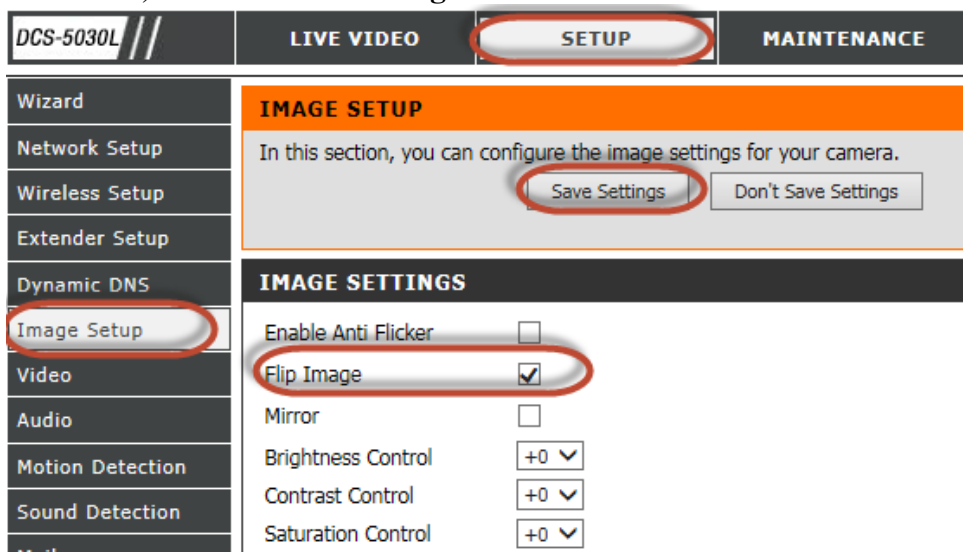
Step 7: Open Internet Explorer and enter the IP address of the camera that you had copy down on the URL bar.



Step 8: Enter the camera **user name** and **password** that had set during setting up of the camera. Click on **OK**.



Step 9: a) Click on **Setup**.
b) Click on **Image Setup** on left hand side.
c) Put a **Tick** in the box beside **Flip Image**
d) Click on **Save Settings**.



--- END ---