

## How to: Setup Motion Detection Snapshot to Email\_DCS-960L?

**Step 1:** Connect the power of the camera and power on.

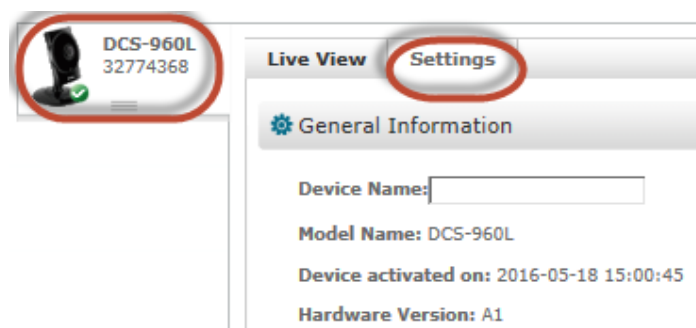
**Step 2:** Open Internet Explorer and enter <http://sg.mydlink.com>



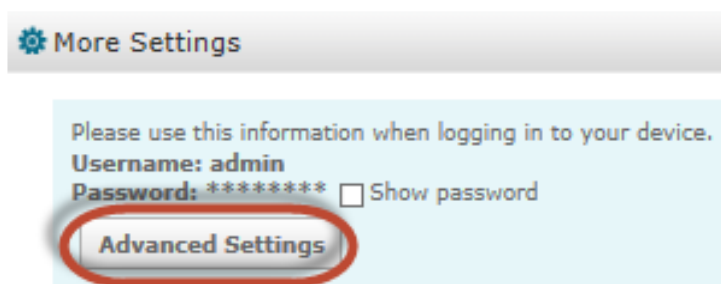
**Step 3:** Enter mydlink registered **username** and **password**. Click on **Sign In**.



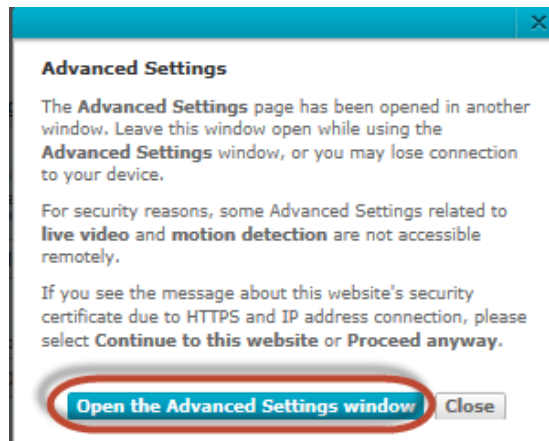
**Step 4:** Select **DCS-960L**. Click on **Settings**



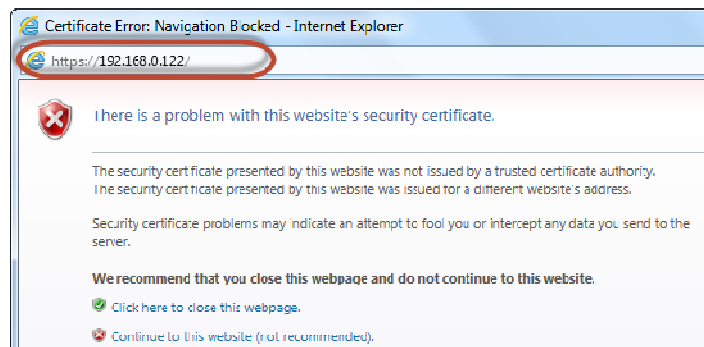
**Step 5:** Click on **Advanced Settings**.



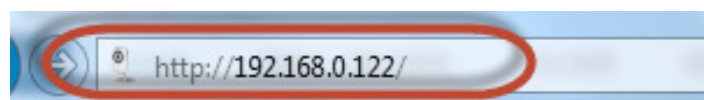
**Step 6:** Click on **Open the Advanced Settings window**.



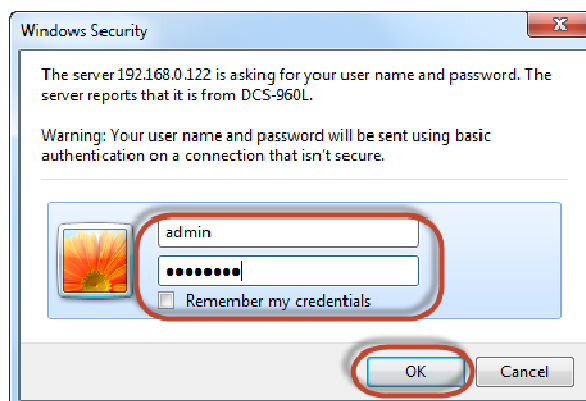
**Step 7:** Copy down the IP address of the DCS-960L show in the URL bar.



**Step 8:** Open Internet Explorer and enter the IP address of the camera that you had copy down on the URL bar.

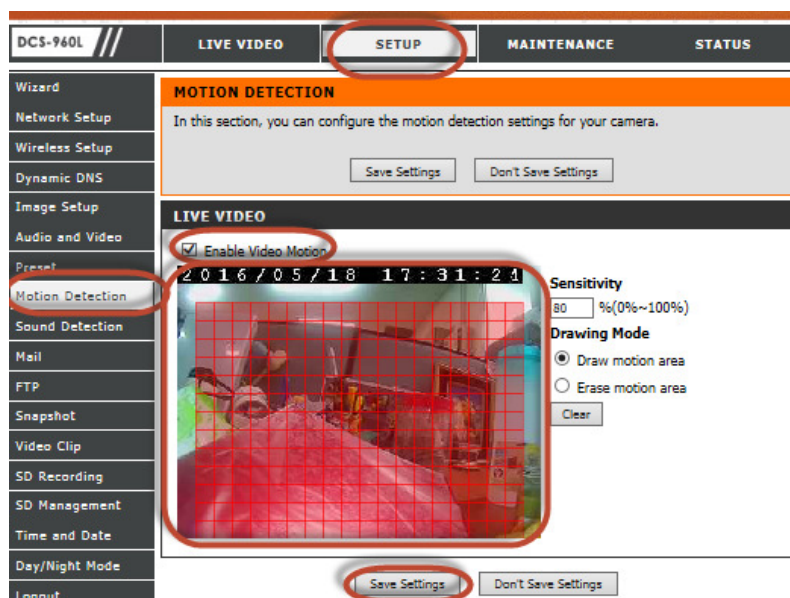


**Step 9:** Enter the camera **user name** and **password** that had set during setting up of the camera. Click on **OK**.



## Step 10:

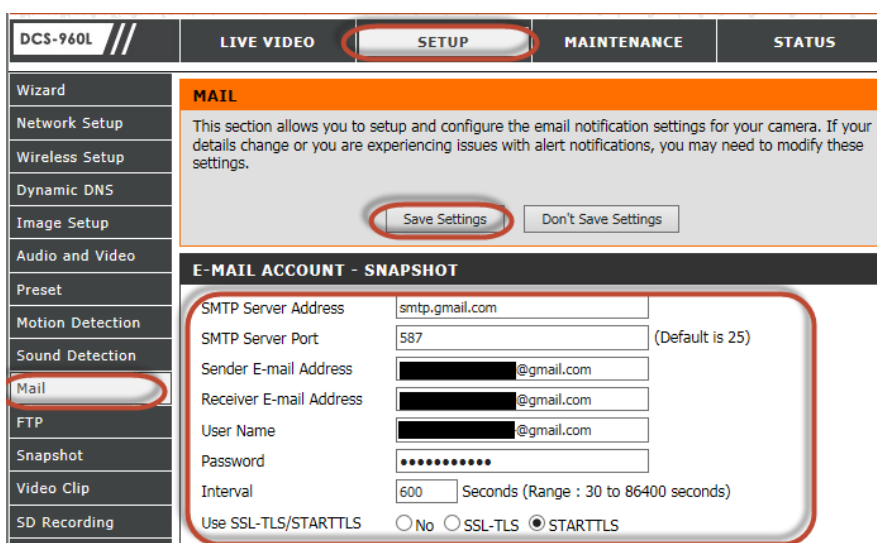
- Click on **Setup > Motion Detection**.
- Put a **Tick** in the box beside **Enable Video Motion**.
- Select the area you want motion to be detected.
- Click on **Save Settings**.



## Step 11: a) Click on Setup > Mail

Under the **E-MAIL ACCOUNT** section, configure the following;

- Enter the **SMTP Server Port** of the Sender E-Mail address.
- Enter the **SMTP Server Port**.
- Enter the **Sender E-mail Address**
- Enter the **Receiver E-Mail Address**
- Enter the **Sender User Name**
- Enter the **Sender Password**
- Type in **600** in the box beside **Interval**.
- Select according base on your **SMTP port**. (No, SSL-TLS, STARTTLS)
- Click on **Save Settings**



## Step 12:

- Click on **Setup > Snapshot** Under the **SNAPSHOT** section, configure the following;
- Put a **tick** in the box beside **Snapshot**.
- Select **Motion**
- Select **6** snapshots with **1** second interval.
- Select **E-mail** as **Target**.
- Click on **Save Settings**

The screenshot displays the web interface for a D-Link camera. At the top, there are navigation tabs: 'DCS-960L', 'LIVE VIDEO', 'SETUP', 'MAINTENANCE', and 'STATUS'. The 'SETUP' tab is active. On the left, a sidebar menu lists various setup options: Wizard, Network Setup, Wireless Setup, Dynamic DNS, Image Setup, Audio and Video, Preset, Motion Detection, Sound Detection, Mail, FTP, Snapshot (highlighted), Video Clip, and SD Recording. The main content area is titled 'SNAPSHOT' and contains the following configuration options:

- Snapshot**:
- Trigger by**: Motion (dropdown menu)
- Only During**:
- Source**: Profile 2 (dropdown menu) (Configurable in [Audio and Video](#))
- Snapshot Type**:
  - Single snapshot
  - 6 snapshots with 1 second interval (3 frames before and 3 frames after motion frame)
- Target**:
  - FTP
  - E-mail

At the bottom of the configuration area, there are two buttons: 'Save Settings' and 'Don't Save Settings'.

--- END ---