

How to: Setup Motion Detection Video to SD Card_DCS-960L?

Step 1: Connect the power of the camera and power on.

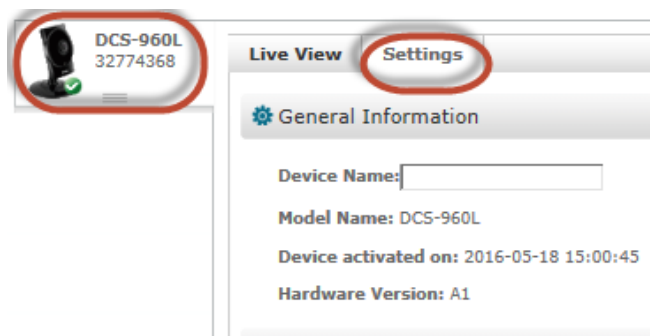
Step 2: Open Internet Explorer and enter **http://sg.mydlink.com**



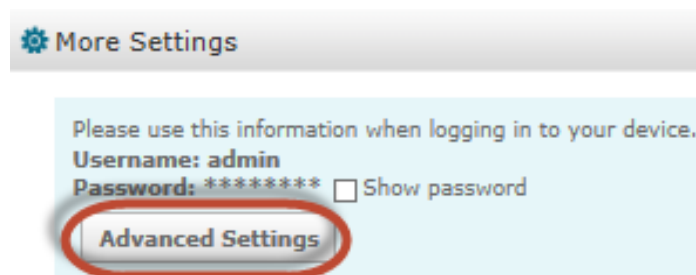
Step 3: Enter mydlink registered **username** and **password**. Click on **Sign In**.



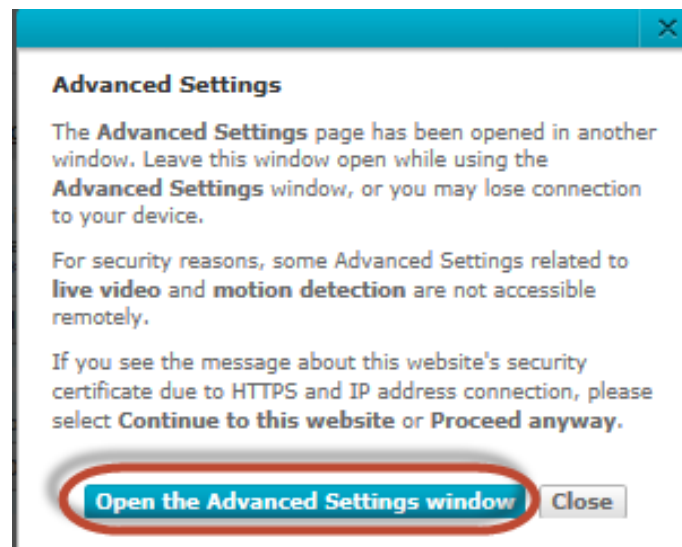
Step 4: Select **DCS-960L**. Click on **Settings**



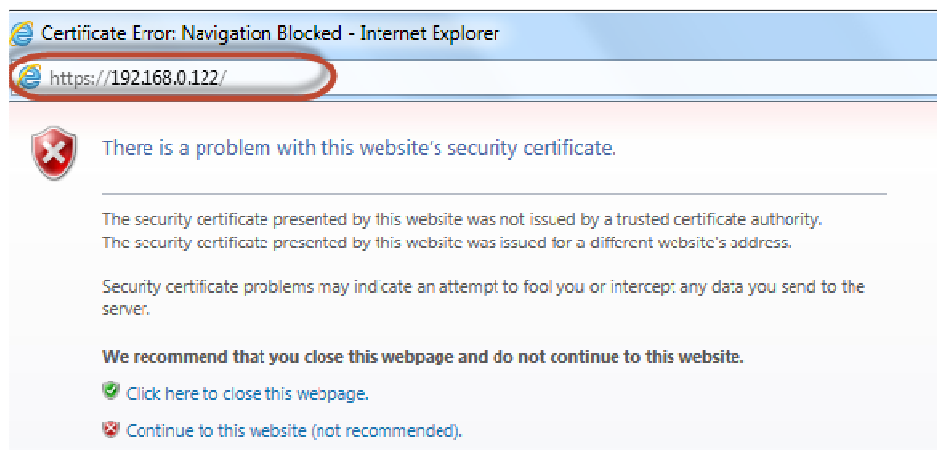
Step 5: Click on **Advanced Settings**.



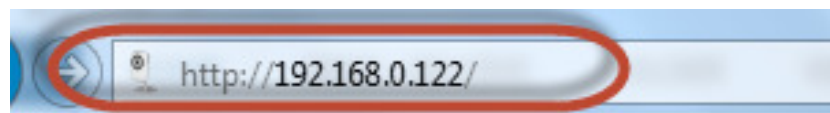
Step 6: Click on **Open the Advanced Settings** window.



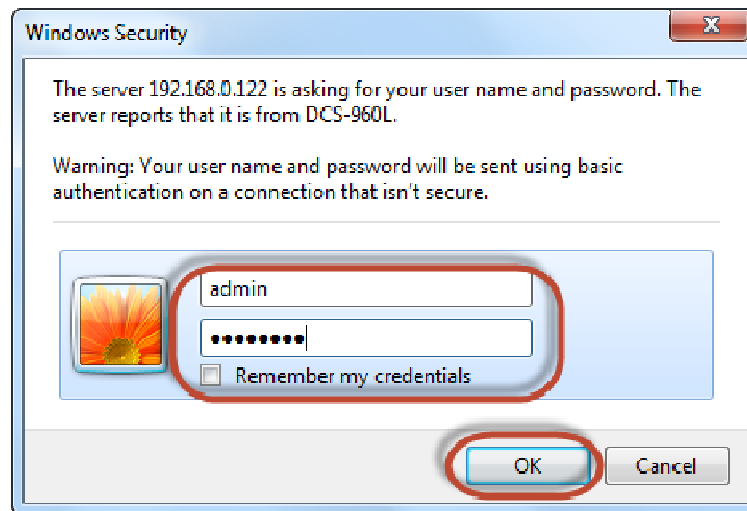
Step 7: Copy down the IP address of the DCS-960L show in the URL bar.



Step 8: Open Internet Explorer and enter the IP address of the camera that you had copy down on the URL bar.



Step 9: Enter the camera **user name** and **password** that had set during setting up of the camera. Click on **OK**.



Step 10:

- a) Click on **Setup > Motion Detection**.
- b) Put a **Tick** in the box beside **Enable Video Motion**.
- c) Select the area you want motion to be detected.
- d) Click on **Save Settings**.



Step 11:

- Click on **Setup > SD Recording**
Under the **SD Recording** section, configure the following;
- Tick **SD Recording**
- Select **Motion**
- Select **5 Seconds** for **Pre-event Recording**.
- Select **Snapshot** as **Recording Type**.
- Type in **200** in the box beside **Keep Free Space**
- Tick **Cyclic**
- Click on **Save Settings**

DCS-960L // LIVE VIDEO **SETUP** MAINTENANCE STATUS

Wizard
Network Setup
Wireless Setup
Dynamic DNS
Image Setup
Audio and Video
Preset
Motion Detection
Sound Detection
Mail
FTP
Snapshot
Video Clip
SD Recording
SD Management
Time and Date

SD RECORDING

Here you may configure and schedule the recording of your camera. You must select the check of 'SD Recording' to turn on the feature.

Save Settings Don't Save Settings

SD RECORDING

SD Recording ☒

Trigger by

Only During ☐

Source

Recording Type Pre-event recording : Seconds

☒ Snapshot
☐ Video

SD Card Keep Free Space MB (Minimum is 200)

☒ Cyclic

Save Settings Don't Save Settings

--- END ---