

How to: Flip Image_DCS-960L?

Step 1: Connect the power of the camera and power on.

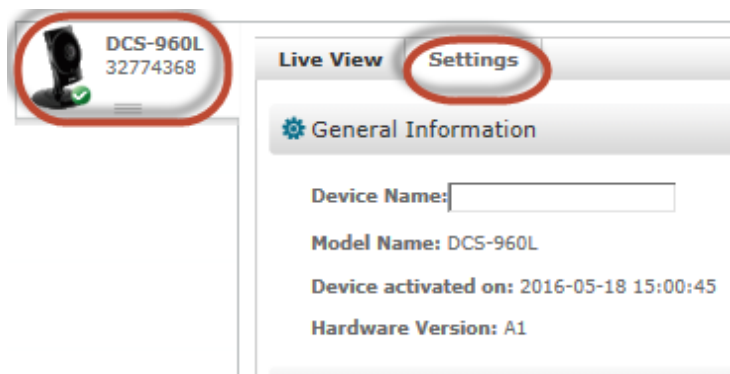
Step 2: Open Internet Explorer and enter **http://sg.mydlink.com**



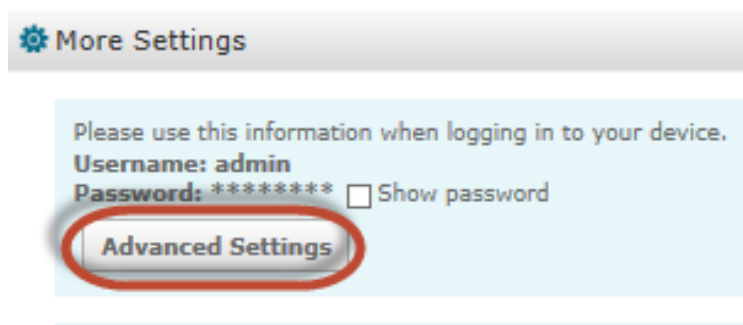
Step 3: Enter mydlink registered **username** and **password**. Click on **Sign In**.



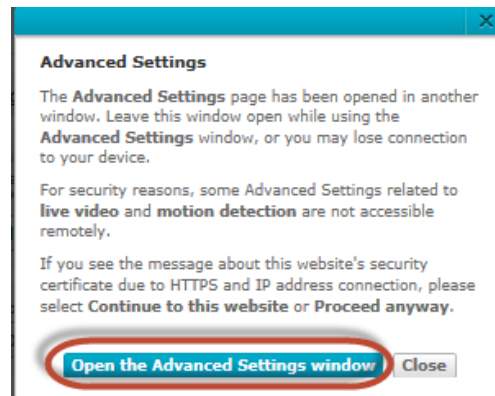
Step 4: Select **DCS-960L**. Click on **Settings**



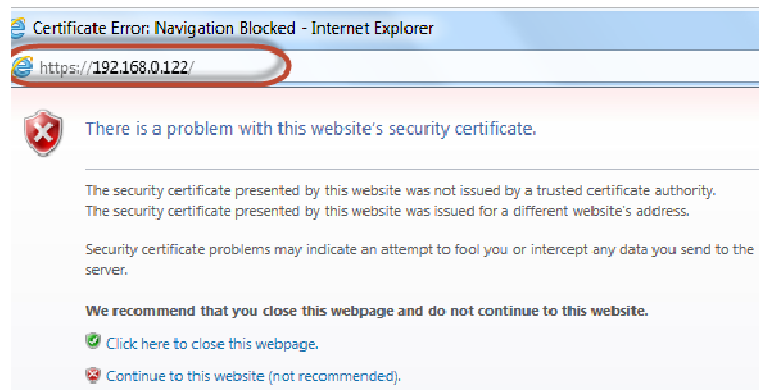
Step 5: Click on **Advanced Settings**.



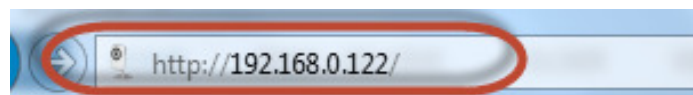
Step 6: Click on **Open the Advanced Settings** window.



Step 7: Copy down the IP address of the DCS-960L show in the URL bar.



Step 8: Open Internet Explorer and enter the IP address of the camera that you had copy down on the URL bar.



Step 9: Enter the camera **user name** and **password** that had set during setting up of the camera. Click on **OK**.



Step 10:

- a) Click on **Setup > Image Setup**.
- b) Put a **Tick** in the box beside **Flip**.

DCS-960L	LIVE VIDEO	SETUP	MAINTENANCE
IMAGE SETUP Your changes made for the image settings will be reflected immediately. The res found in the Live Video window below.			
LIVE VIDEO 2016/05/24 11:14:52 			
IMAGE SETTINGS			
Brightness	50	Saturation	55
Contrast	70	Hue	0
Sharpness	70	B/W	<input type="checkbox"/>
Mirror	<input type="checkbox"/>	Flip	<input checked="" type="checkbox"/>
Anti flicker	50Hz		

--- END ---