

# Welcome to D-Link

## IP CAMERA TRAINING

### Using Home Camera Firmware



**D-Link** Installation Wizard

### Network Camera Installation

Step 2 - Click

**Setup**

Upgrade

Reset to default

About

Exit

Search	Add	Remove	Uncheck All	Link to selected device(s)
MAC Address	IP Address	Assigned	Model	Auto IP
<input checked="" type="checkbox"/> 00-13-46-DB-64-D2	192.168.0.21	Yes	DCS-2120	Yes

Step 1 - Check

### Network Camera Installation

Step 1 - Key in the name you like

Step 3 - Click

Previous

Next

Skip

About

Exit

Camera name:

DCS-2120

\*Blank admin password will disable user authentication

Admin password:

Confirm password:

Date/Time Settings

Date:

2007/11/27

Time:

15:11:06

Step 2 - Key in the password

- Keep current date and time
- Synchronize with computer time
- Manual
- Automatic

### Network Camera Installation

Step 1 - Uncheck

Step 3 - Click

Previous

Next

Skip

About

Exit

Reset IP address at next boot

IP Address:

192 . 168 . 0 . 21

Subnet mask:

255 . 255 . 255 . 0

Default router:

192 . 168 . 0 . 1

Primary DNS:

192 . 168 . 0 . 1

Secondary DNS:

0 . 0 . 0 . 0

Step 2 - Key in a fix IP

### Network Camera Installation

Step 1 - Key the same "SSID" as your Router

Step 7 - Click

Previous

Next

Skip

Step 2 - Choose "WEP"  
Step 3 - Choose "Open"  
Step 4 - Choose "64 bits"  
Step 5 - Choose "HEX"

Step 6 - Key the same "password" as router

SSID:

Wireless mode:

Channel:

TX rate:

Security:

Auth mode:

Key length:

Key format:

1

2

3

4

### Network Camera Installation

Previous

Next

Skip

About

Exit

**Warning**

Any incorrect setting may cause system failure. Confirm all settings.

Click

SSID:

Wireless mode:

Channel:

TX rate:

Security:

Auth mode:

Key length:

Key format:

1

2

3

4

### Network Camera Installation

Previous

Click

Apply

About

Exit

The Setup wizard has completed. Click on Previous to modify changes or mistakes. Click Apply to save the current settings and update to the selected server.

### Network Camera Installation

Search Add Remove Uncheck All Link to selected device(s)

MAC Address	IP Address	Assigned	Model	Auto IP
<input checked="" type="checkbox"/> 00-13-46-DB-64-D2	192.168.0.21	Yes	DCS-2120	Yes

#### Update Progress

Update device settings ...

Serial Number	IP Address	Model	Progress
00-13-46-DB-64-D2	192.168.0.21	DCS-2120	Done

Click

Done



### Network Camera Installation

	Search	Add	Remove	Uncheck All	Link to selected device(s)
<b>Setup</b>	MAC Address	IP Address	Assigned	Model	Auto IP
<b>Upgrade</b>	<input checked="" type="checkbox"/> 00-13-46-DB-64-D2	192.168.0.21	Yes	DCS-2120	Yes

Reset to default

About

Exit

Click to do firmware upgrade



### Network Camera Installation

	Search	Add	Remove	Uncheck All	Link to selected device(s)
<b>Setup</b>	MAC Address	IP Address	Assigned	Model	Auto IP
<b>Upgrade</b>	<input checked="" type="checkbox"/> 00-13-46-DB-64-D2	192.168.0.21	Yes	DCS-2120	Yes

Reset to default

About

Warning

The upgrade procedure may not complete if the IP address of the remote camera is not fixed.

Click OK

### Network Camera Installation

192.168.0.21

Name	Value	Status
MAC Address	00-13-46-DB-64-D2	OK
Firmware version	1.02a	OK

Previous

**Upgrade**

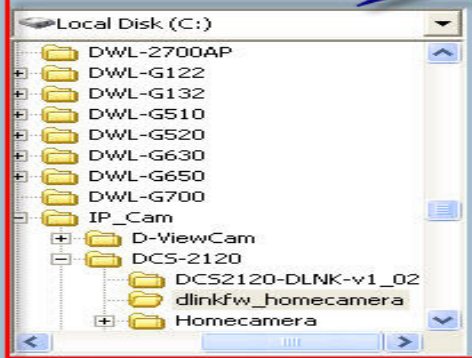
About

Exit

Step 3 - click

Step 1 - Choose the "Homecamera Firmware"

Locate the firmware to upgrade



HomeCamera-Firmware.pkg

Step 2 - Click on the Firmware you need

Selected package:

HomeCamera-Firmware.pkg

### Network Camera Installation

192.168.0.21

Name	Value	Status
MAC Address	00-13-46-DB-64-D2	OK
Firmware version	1.02a	OK

Previous

**Upgrade**

About

Exit

Warning

The file you selected is older than the device (192.168.0.21). Will you still upgrade the firmware?

**Yes**

No

Click



HomeCamera-Firmware.pkg

Selected package:

HomeCamera-Firmware.pkg

## Update Progress

### Update device settings ...

Serial Number	IP Address	Model	Progress
00-13-46-DB-64-D2	192.168.0.21	DCS-2120	Done

Click

Done



## Installation Wizard

### Network Camera Installation

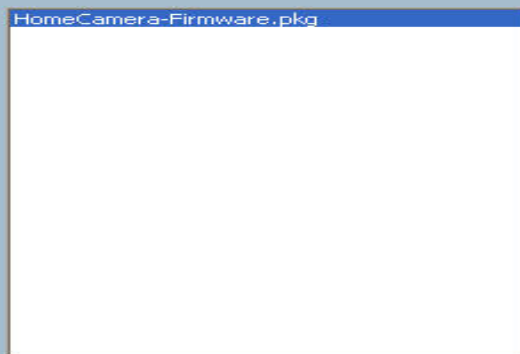
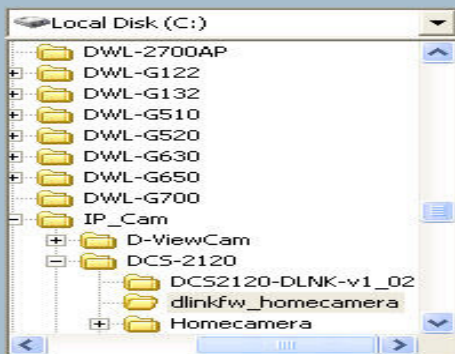
192.168.0.21

Name	Value	Status
MAC Address	00-13-46-DB-64-D2	OK
Firmware version	IP7137-DLNK-0201n	OK

Click

Exit

Locate the firmware to upgrade



Selected package:

HomeCamera-Firmware.pkg

Step 1 - Key in "http://www.homecamera.com"

Click

HOME WHAT IS HOMECAMERA? PRICING SUPPORT SIGN UP NOW! FREE! LOGIN

View your camera via

LOGIN

USERNAME (Email) PASSWORD

Forgot password? SIGN IN >>

SIGN UP NOW!  
IT'S FREE!

Skip intro

HOMECAMERA BETA

Create An Account

PERSONAL INFORMATION

COMPLETELY FREE TRIAL; NO CREDIT CARD REQUIRED

Email address williams.lee@gmail.com

Re-type email address williams.lee@gmail.com

Enter a password

Re-type your password

First name Williams

Last name Lee

Country Singapore

Timezone (GMT +8:00) Beijing, Perth, Singapore, Hong Kong

Mobile number 65 - 90034848

Step 1 - Key in Email address

Step 2 - Key in Password

Step 3 - Key in "First Name"  
Step 4 - Key in "Last Name"  
Step 5 - Choose "Country"  
Step 6 - Choose "TimeZone"  
Step 7 - Key in you HandPhone Number

IMPORTANT! The timezone you select influences your AutoRecord settings as well as other HomeCamera functions. Please select carefully.



## Motion Detection Settings

Motion Detection: HomeCamera supports motion detection on your cameras. Where would you like motion-detection pictures and videos to be sent?

Send to my email

Send to my mobile phone

\* = required information

### End User Software License Agreement and Terms & Conditions

This End-User Software License Agreement and Terms and Conditions govern the use of the accompanying software. By clicking on the "Accept" Button or by downloading or installing the software, you agree to all the terms of this agreement. If you do not agree to any of the terms of this agreement, you must not accept, download or install the software. We may change these terms at any time by posting changes [www.homecamera.com](http://www.homecamera.com); such changes shall become effective within thirty (30) days of such posting. Please review these terms regularly to ensure you are aware of these changes. Your continued use of the software after the expiry of the 30-day period shall constitute your acceptance to the changes.

#### 1. Jurisdiction & Governing Law

- a. Wireless Intellect Labs is a company incorporated in Singapore. This agreement shall be governed by the laws of the Republic of Singapore, a country that is internationally praised for ethical business, good clean governance, and an efficient judiciary.
- b. To the extent not prohibited by applicable law, it is agreed between Wireless Intellect Labs and yourself that the exclusive remedy for all disputes arising out of this agreement or the software (the "Software")

Step 1 - Click



I have read and understood the End User License Agreement and Terms and Conditions of Use of the Service and I accept the same.

Got a question? We'd be happy to help. Drop us an email via the [Contact Us](#) page or call us at +65 6843 8200 (our operators are available to take your call 24 hours a day, 7 days a week).

Step 2 - Click

NEXT >>

CLEAR >>

CANCEL >>

DCS-2120 - Windows Internet Explorer

http://192.168.0.21/

Step 1  
Key in the IP Cam  
IP Address

D-Link  
Building Networks for People

SECURICAM Network  
Wireless Internet Camera with 3G Mobile Video

DCS-2120

Snapshot

Connection Type

Configuration

Step 2  
Click



Step 1 Click

Step 2 Click

- Step 3 - Keyin email you sign in at homecamera in HomeCamera user-ID
- Step 4 - Keyin your email password in HomeCamera password
- Step 5 - Keyin "www.homecamera.com" in HomeCamera Server Address
- Step 6 - Keyin "8900" in Streaming Server port
- Step 7 - Keyin "www.homecamera.com" in Streaming Server Address
- Step 8 - Keyin "8999" in Streaming Server port
- Step 9 - Keyin the name you like in Camera name
- Step 10 - Choose "Yes" in Private
- Step 11 - Can key any description you like in Camera Description

- DCS-2120
- HomeCamera Setup
- Network
- Mail/FTP
- DDNS
- Access List
- Audio/Video
- Image Setting
- Motion Detection

Home Advanced

HomeCamera Setup

D-Link cameras can be used with a subscription service called HomeCamera which is designed to make it easier for you to setup and access your D-Link camera. Visit [www.homecamera.com](http://www.homecamera.com) for details on the HomeCamera service or [www.homecamera.com/dlink](http://www.homecamera.com/dlink) to learn how to setup your camera for the HomeCamera service.

HomeCamera user-ID:<sup>2</sup>  
HomeCamera password:<sup>2</sup>  
HomeCamera Server Address:<sup>2</sup>  
HomeCamera Server Port:<sup>2</sup>  
Streaming Server Address:<sup>2</sup>  
Streaming Server Port:<sup>2</sup>  
Camera Name:<sup>2</sup>  
Private?:<sup>2</sup>  
Camera Description (optional):<sup>2</sup>

Form fields for HomeCamera Setup: HomeCamera user-ID (dlinktest@abc.com.sg), HomeCamera password (masked), HomeCamera Server Address (www.homecamera.com), HomeCamera Server Port (8900), Streaming Server Address (www.homecamera.com), Streaming Server Port (8999), Camera Name (Dlink test), Private? (Yes selected), Camera Description (Demo only).

Step 12 Click

Apply Cancel



Home

Advanced

Tools

Status

Help



DCS-2120

HomeCamera Status

Device Info

Log

This screen is automatically refreshed every 5 seconds. If you have just completed HomeCamera configuration, it may take some time for this screen to be updated. Please wait.

Will show "Successful connected"

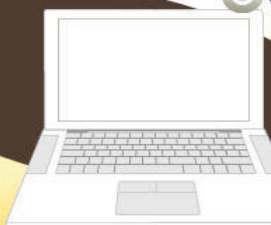
HomeCamera main server:  
HomeCamera streaming server:

Disconnected  
Disconnected

Please click [here](#) to return to the Configuration Page.

Step 1 - Key in the "Email Address" in Username  
Step 2 - Key in the "Password" in the Password

**Super-easy software setup!**



**LOGIN**

USERNAME (Email) PASSWORD

williams.lee@gmail.com [password]

Forgot password? **SIGN IN >>>**

**SIGN UP NOW!**  
**IT'S FREE!**

Step 3 - Click

[Skip intro](#)

**HomeCamera is the world's easiest-to-use Internet home surveillance camera system. And it's FREE!**

Turn your webcam into an Internet home surveillance camera with HomeCamera's webcam security software. Then remotely monitor your home, your baby, your pets, and even your store, with a PC, PDA or mobile phone from anywhere in the world. HomeCamera also includes advanced home surveillance features like motion detection, mobile phone alerts, camera sharing and time lapse recording.

**WHAT IS HOMECAMERA?**  
TAKE A QUICK TOUR >>>



**WORKS WITH ALL WEBCAMS**  
PLUS! ENHANCED FEATURES WITH D-LINK



**ONLINE**  
LIVE CUSTOMER SUPPORT

**NEED A CAMERA?**

**50** mobile credits available

**BUY MORE**

- Cameras Connected
- Camera Archives
- View Auto-Record Settings
- Download Camera Software

**OFFLINE**

LIVE CUSTOMER SUPPORT

Advertisement



**mjuvee**

**CAMERAS ONLINE**

**My Cameras**

LOCATION Image [Thumbnail] Video

No cameras found.

**My Buddys' Cameras**

LOCATION Image [Thumbnail] Video

No Buddys found.

**My Camera**

Video & images from your camera will be displayed here

Date and time of camera access is shown here.

Email to myself Send to my mobile

Email to someone else Delete from archives

## D-Link IP CAMERA TRAINING

**End User**



D-Link Corp. – PROPRIETARY & CONFIDENTIAL



**Thank You**