



SharePort – Enabling USB Sharing with DIR-655

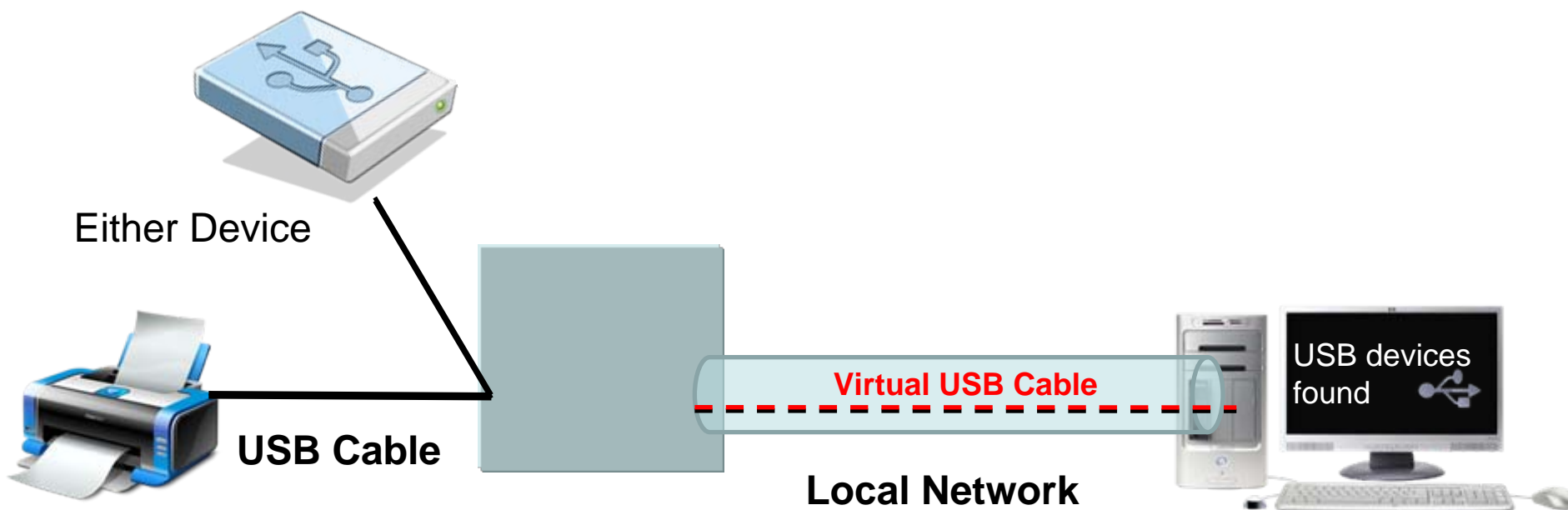
Guide to SharePort in DIR-655

D-Link

www.dlink-intl.com
DRS Marketing – 26 August 2008

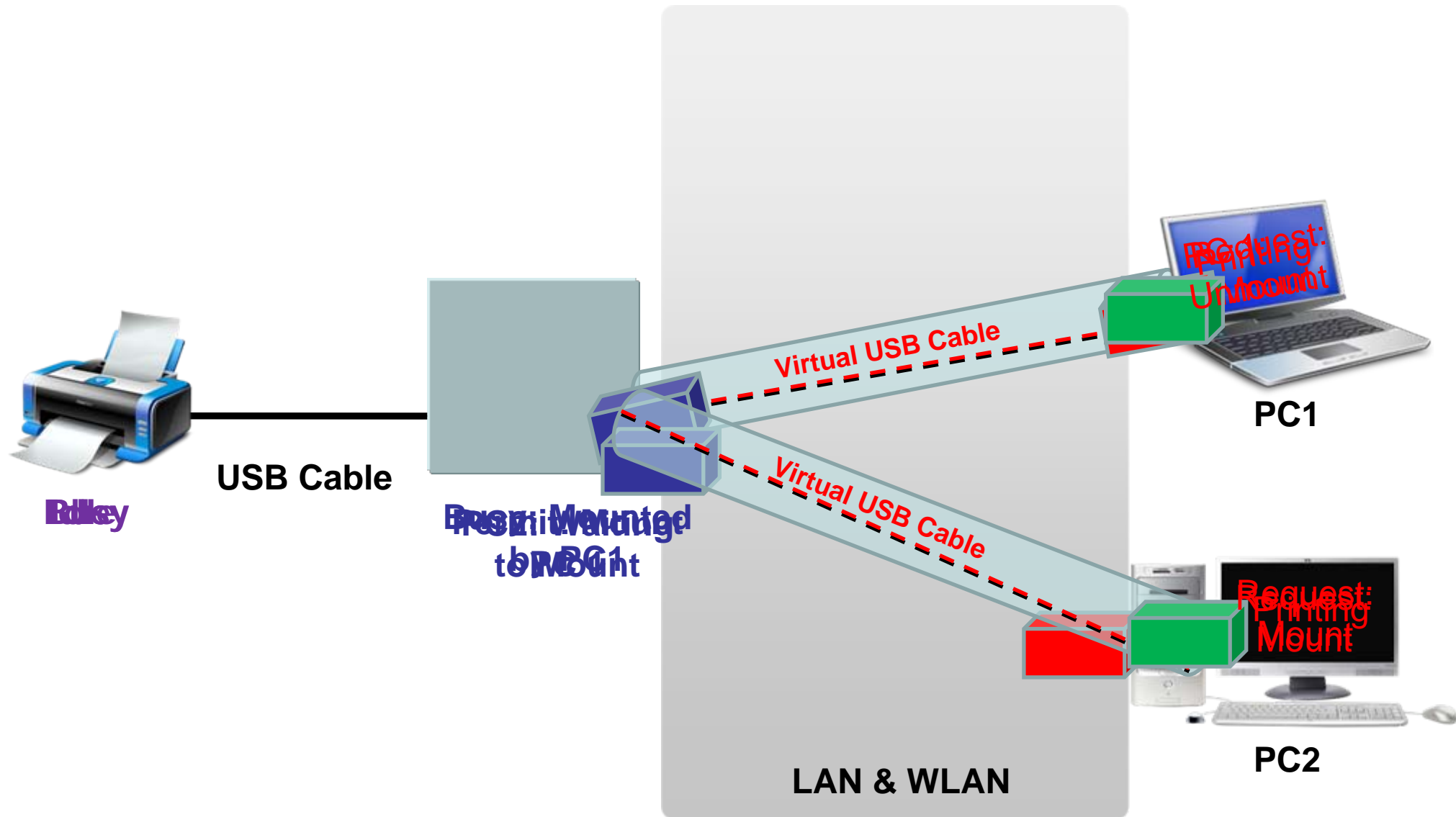
SharePort™

- USB over IP Technology
 - Virtual USB connection is seamless to your Windows.
 - Use Printers, MFPs, Scanners and USB External Storages* just like they directly connect to your PC via USB.



*Different from NAS, DIR-655 support basic file sharing function via USB over IP technology. Users can share the attached USB external Hard Drive one at a time.

USB over IP technology



How To Use SharePort?

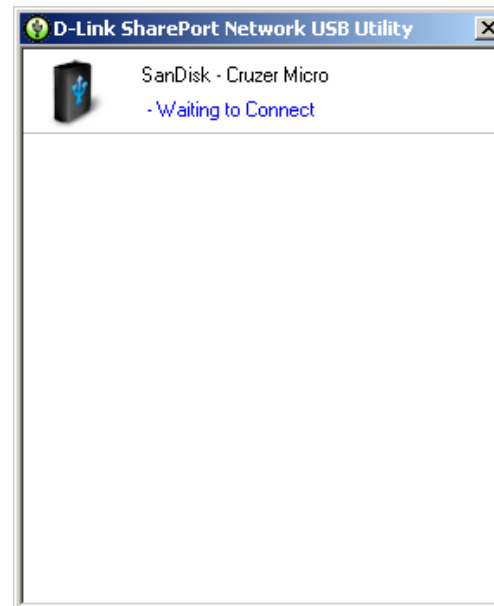
1. Click on the SharePort icon on the desktop



2. Connect the USB device to the USB port on DIR-655

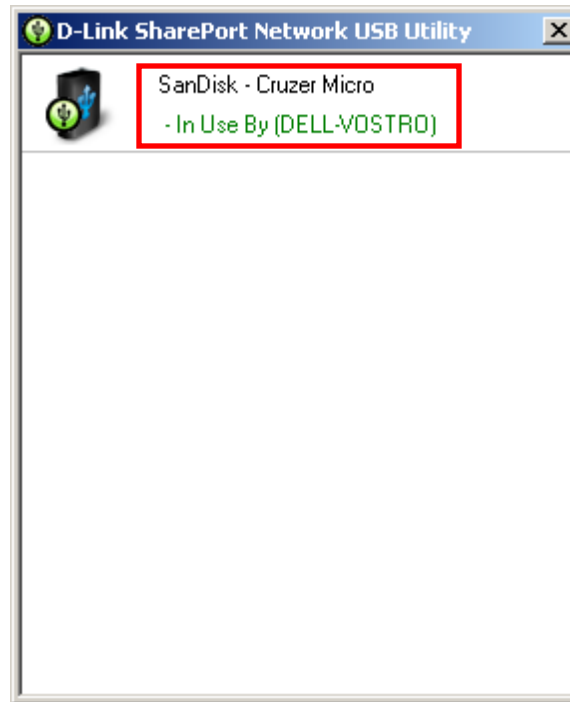


3. The connected device will be detected by SharePort and is ready to use



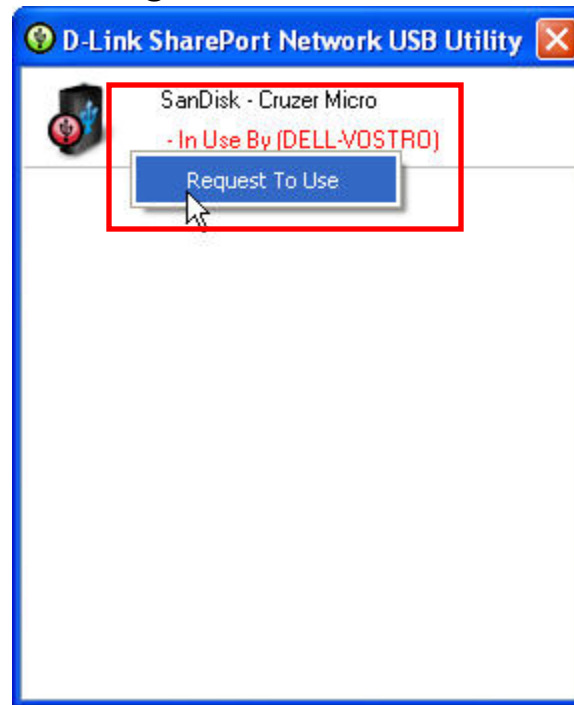
How To Use SharePort?

4. If the device is already in use by another computer, you will see from the SharePort that which computer is currently access it.



How To Use SharePort?

5. Even though the device may already be in use, other computers may still request to use the device by right-clicking the device and selecting "Request to Use"



6. The first computer with the device connected will receive a pop up screen that other users are trying to access it.





FAQ

How To Use SharePort?

1. What kind of devices can be connected to DIR-655 ?

You can connect devices such as Multi-functional Printers, Printers, Scanners and External storage. As these devices are dependant on external factors such as drivers and utilities from the vendor, D-Link advises customers to contact their vendor directly for any support issues.

2. Can I connect more than 1 USB devices to DIR-655?

DIR-655 is designed to support only 1 USB device connected to it. Users may try to connect an external powered USB hub to DIR-655. However, due to the nature that USB hub is a shared medium which may have different requirements on power which differs from vendor to vendor, D-Link does not offer direct support for Users who are using USB hub with DIR-655.

3. Can I share the USB device over the internet with my friends?

No. SharePort is designed to work only within the same network environment of DIR-655. As such, only the computers connected within the home network of DIR-655 can use SharePort

How To Use SharePort?

4. Can I set access rights to the external storage?

No. SharePort is not the same as a NAS. The external storage operating under SharePort will appear as if it is connected directly to your computer via USB.

5. Can I do P2P with on DIR-655 without turning on my computer?

No. SharePort does not function in the way of a NAS and does not have Bittorrent client built in. It is a virtual USB technology.

Thank You!

D-Link

D-Link International Pte Ltd

1 International Business Park #03-12 The Synergy Singapore 609917

[T] (65) 6774 6233 [F] (65) 6774 6322 [E] info@dlink.com.sg [w] www.dlink-intl.com

Technical Support

6501 4200

support@dlink.com.sg