

Q How do I record motion using IP surveillance?

A To schedule video recording with motion detection, you must first enable this feature on the Internet camera. This can serve as a security device by recording only when motion is detected. The camera can have up to 3 motion detection windows activated at any given time.

Web-based Configuration

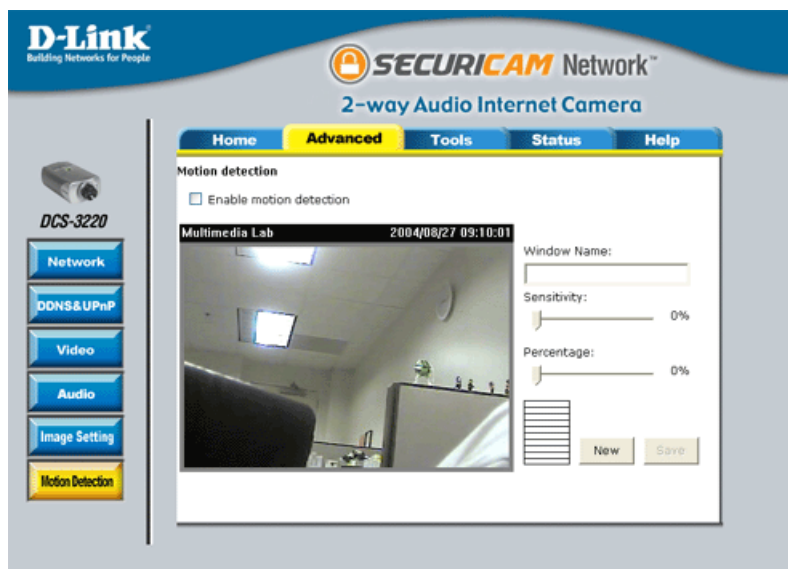
First, setup motion detection windows in the web-based configuration of the camera.

Step 1 Open a web browser and type the IP address of the camera in the address bar. Press **Enter**.

Step 2 Click **Configuration** on the left.



Step 3 Click the **Advanced** tab and then click **Motion Detection** on the left.



Step 4 Check the **Enable Motion Detection** checkbox.

Step 5 Click **New** to create a window to monitor. A small window will appear on the main screen. Move this window to the area you wish to monitor.

Step 6 Below *Window Name* enter a name for the motion detection window. Adjust the *Sensitivity* and *Percentage* for the new window.

- Adjusting the *Percentage* allows you to require a certain amount of the screen to be filled with motion before an action will be triggered.
- Adjusting the *Sensitivity* allows you to require a certain amount of motion before an action will be triggered.



Step 7 Click **Save** to apply the new settings.

Step 8 Repeat *Step 3-4* if you plan to have more than one window enabled for motion detection.

IP surveillance Configuration

Once you have saved your settings in the web-based configuration of the camera you will need to enable the newly created windows in IP surveillance.

Step 1 Go to **Start > Programs > Dlink > IP surveillance Software > Monitor**.

Step 2 Enter the username and password. Click **OK**

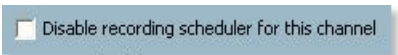
Step 3 Click **Configurations** (represented by the hammer, wrench, and screwdriver).



Step 4 Select **Scheduler**.

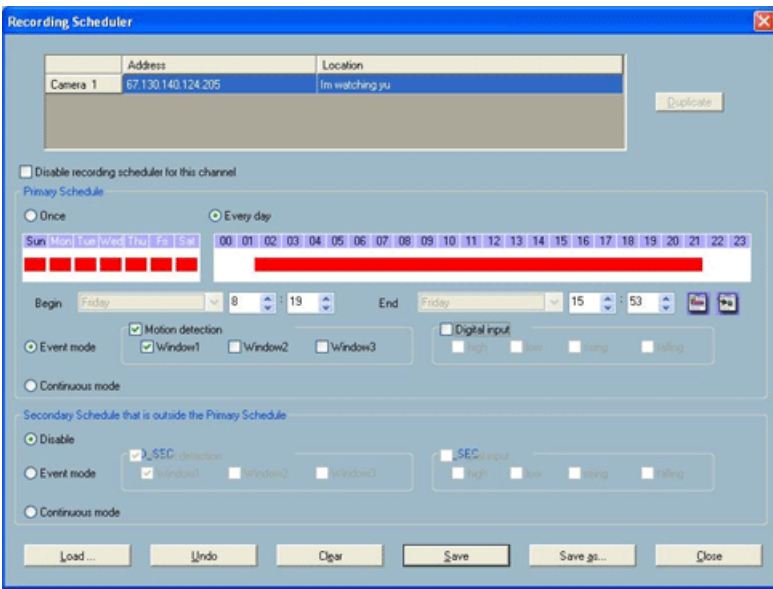


Step 5 Make sure that **Disable recording schedule for this channel** is unchecked.



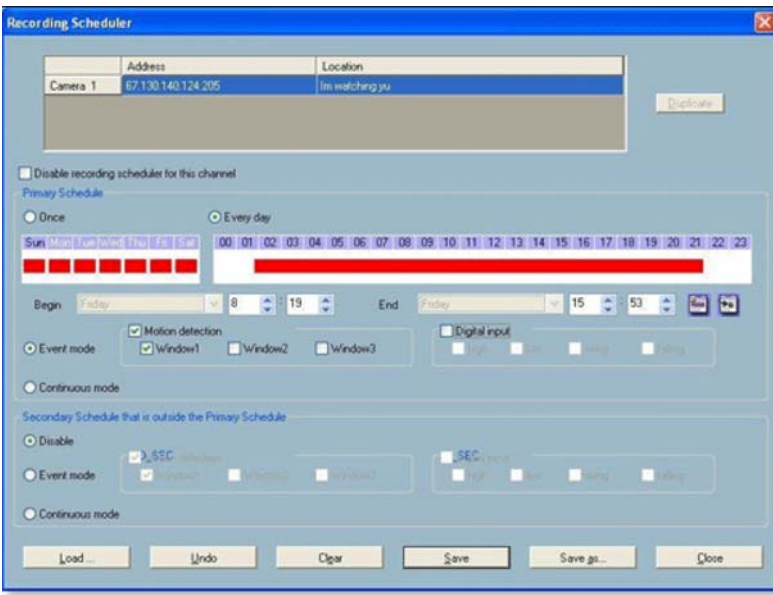
Step 6 In the *Primary Schedule* select **Once** (for one time recording) or **Event Mode** (for recording events) using the radio buttons.

For example: If you would like to record events every day during a certain time frame, click on the beginning time and then drag your mouse to the ending time. Schedule recording can be configured by minutes, hours, days, weeks, or months.



Step 7 If you are going to record using motion detected select **Event Mode** using the radio buttons and then select the *Motion Detection Window* you would like to record from using the checkboxes.

Note: You must first create motion detection windows inside the web configuration page of the camera. Remember, the motion detection window names are arranged in the order that they were created.

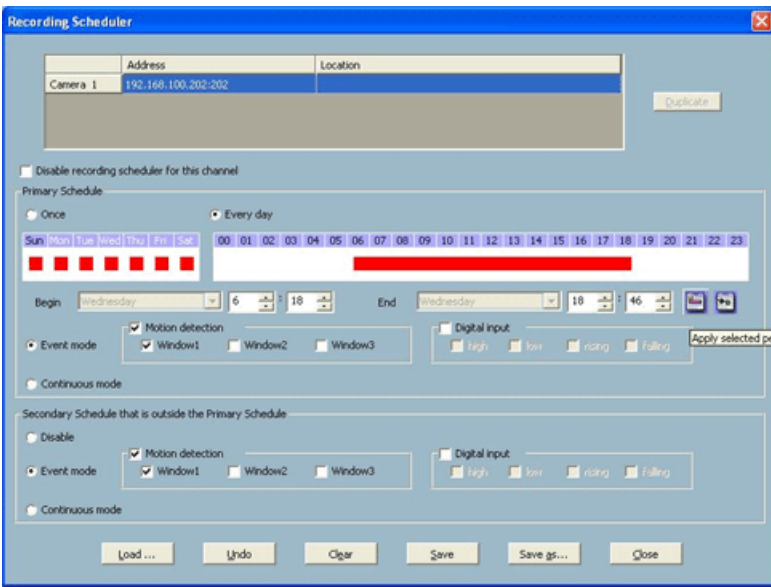


Step 8 If you want to continuously record during a set time schedule select **Continuous Mode** using the radio buttons.



If you do not want to perform an *all-time* secondary schedule then click **Save**. You must do a *Save As* first in order to load the schedule again in the event IP surveillance is accidentally shut down.

Step 9 If you would like to record outside the primary schedule select **Even Mode** or **Continuous Mode** using the radio buttons under *Secondary Schedule*.



Step 10 Select **Continuous Mode** using the radio buttons to continuously record outside the primary schedule.

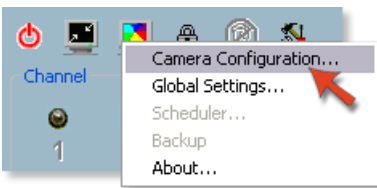


Step 11 Click **Save** and then click **Close**.

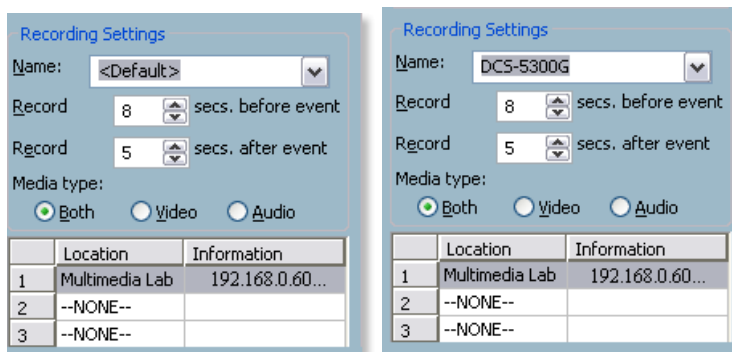
To save any settings for later use click **Save As** and then click **Save**.



Step 12 Click **Configurations** and select **Camera Configuration**.



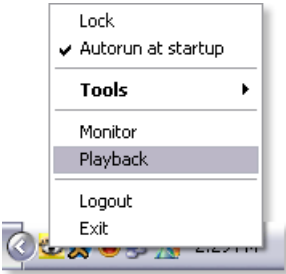
Step 13 Highlight the camera you wish to create a recording folder for. Under *Recording Settings* create a name for your recordings. This will be the name of the folder that your recordings will be saved to. Click **Save**.



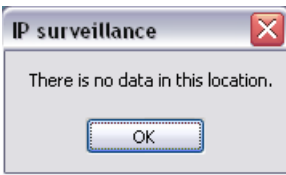
Step 14 Click **OK**.



Step 15 Right-click the IP surveillance icon in the system tray (lower right-hand area of the screen) and select **Playback** to launch the Playback software.

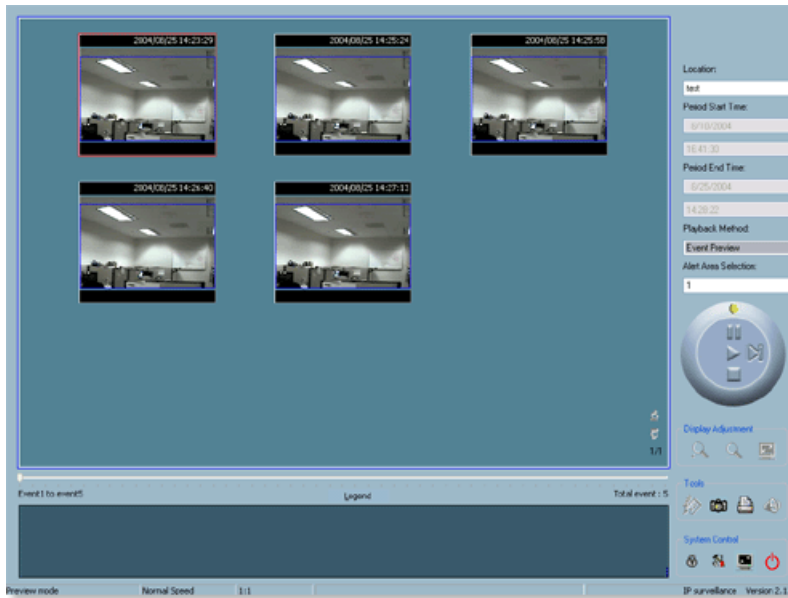


Step 16 Click **Location** using the drop-down list and select camera you would like to playback recording. If there is not a recording for that location you will receive a message stating that there isn't any data available.

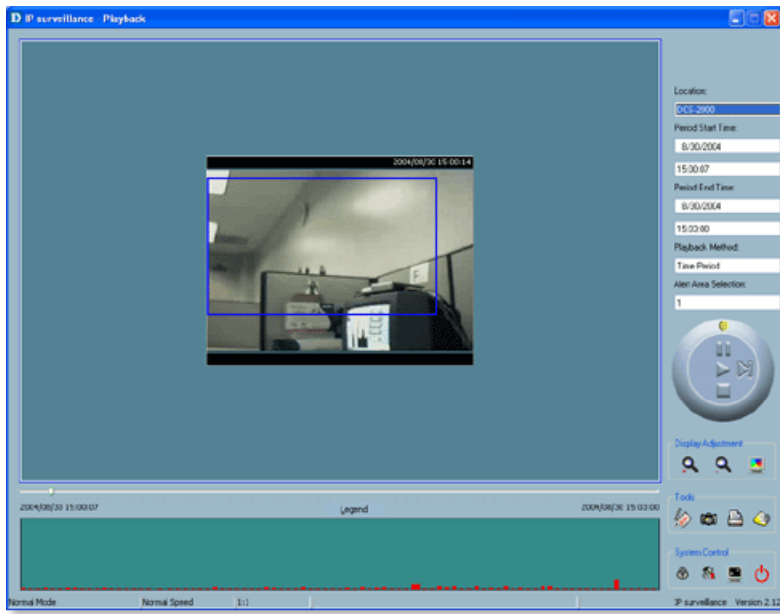


Step 17 Select the **Playback Method** that you would like to use to review the recording.

- **Event Preview** - Preview what motion detection has been recorded.



- **Time Period** - Preview by specifying *Period Start Time* and *Period End Time*.



- **Full Range** - View all recordings.

