

How do I log into my DNS-323?

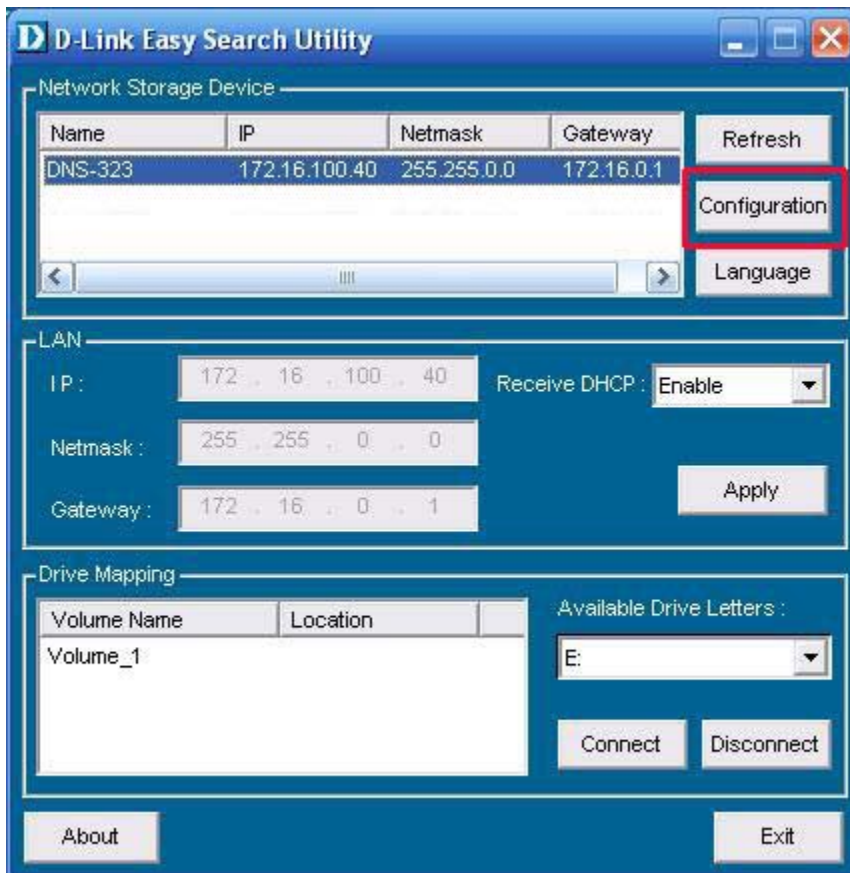
When first powered on, the **DNS-323** will wait to be assigned an IP address via DHCP. *If it does not receive a DHCP assigned IP address, by default it will have a self-assigned IP address of 192.168.0.32.*

It is recommended to use the **D-Link Easy Search Utility** to access and the **DNS-323**. The **D-Link Easy Search Utility** is provided on the product CD or can be downloaded from our [support site](#).

Step 1 Launch the **D-Link Easy Search Utility**.



Step 2 Highlight your **DNS-323** and click **Configuration**.



Step 3 The Web based utility will launch. You will be prompted to enter your **User Name** and **Password**. *By default, the User name is **admin** and there is no password.*

D-Link

DNS-323

User Name:

Password:

[Configuration](#)

[Downloads](#)

STORAGE

Copyright 2004-2006 D-Link Systems, Inc.