

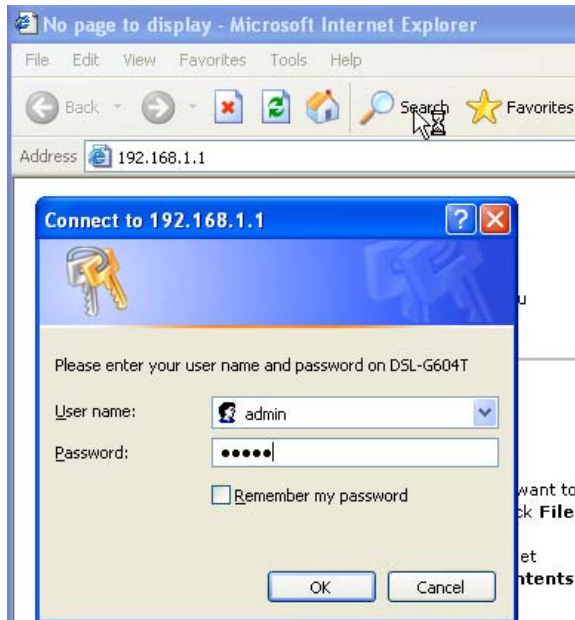
How to configure DSL-G604T to connect to Singnet / Pacific net?

Please note use only hard-wired network connections, to do the setting.

**** Disable firewall in your PC to avoid login problem****

Step 1 Connect your PC to the LAN port of your DSL-G604T

Step 2 Start up a Internet explorer and key in **192.168.1.1** (by default)

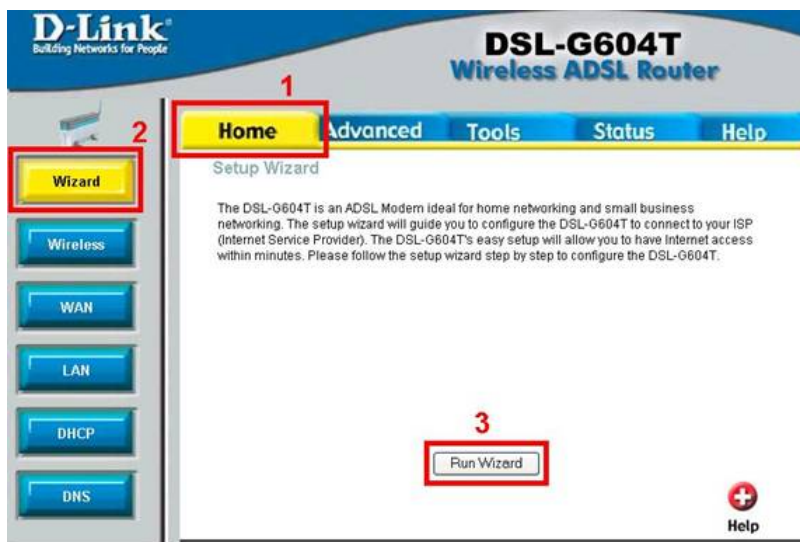


By default

Username: admin

Password: admin

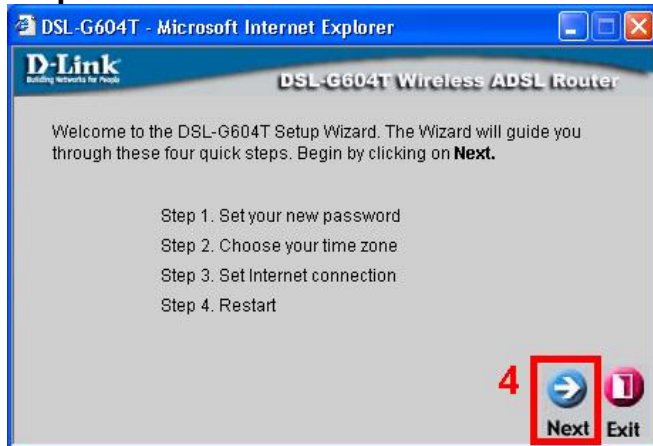
Step 3 Click on the **Home** tab.



Step 4 Click on the **Wizard** button.

Step 5 Click on the **Run Wizard** button.

Step 6 Click on the **Next** icon.



Step 7 Key in a new password into the New Password box followed by keying in the same new password into the Verify Password box. Or you can leave it blank and click on **Next** to use the default **password :admin**



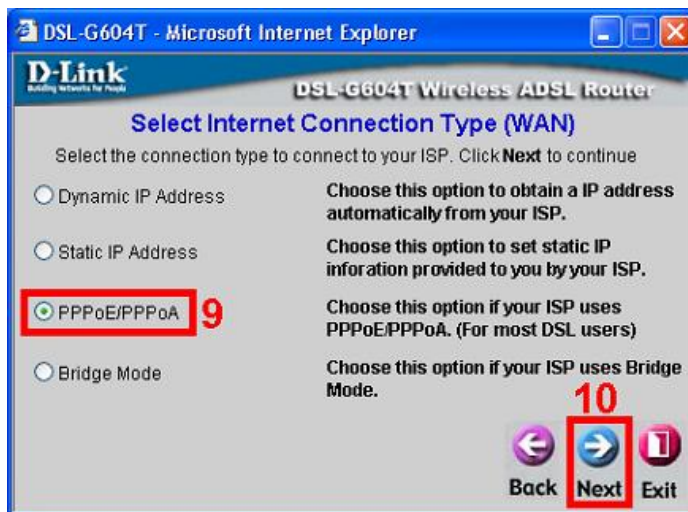
Step 8 Click on the **Next** icon.

Step 9 Select the correct Time zone.



Step 10 Click on the **Next** icon.

Step 11 Select the **PPPoE/PPPoA** option.



Step 12 Click on the **Next** icon.

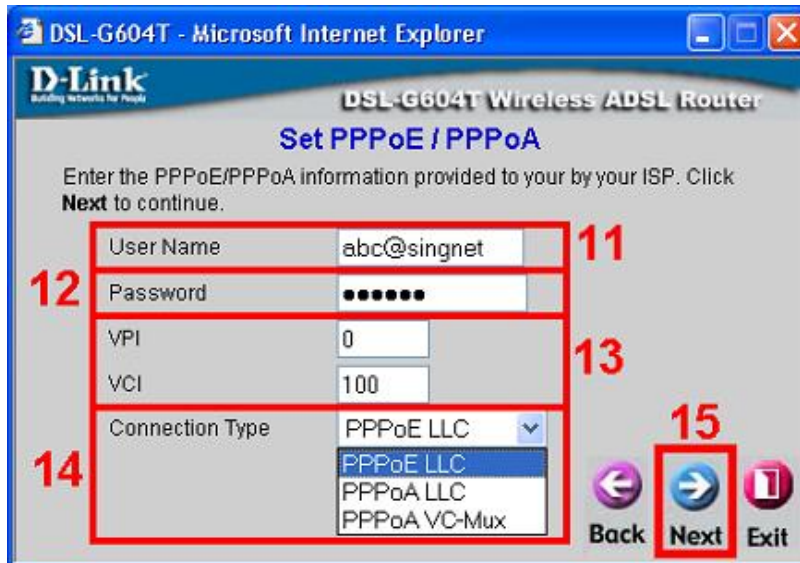
Step 13 Key in your **Broadband account User Name and Password**.

Step 14 Key in your **VPI** and **VCI** values. The value usually comes customized for local ISP. Please do leave it as the default value. **VPI = 0, VCI= 100**.

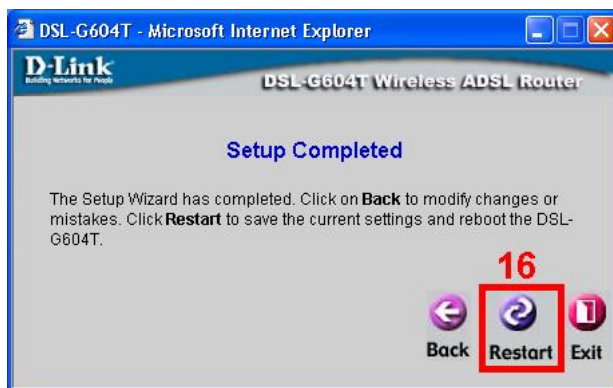
Step 15 Select the correct Connection type. **PPPoE LLC**

*For Singnet user your Singnet username should end with xxxxx@singnet or xxxxx@singnet1500 or xxxxx@singnetbusiness
For Pacific net user your username should end with xxxxxxx@pacific.net.sg or xxxxx@pacnet1500*

Username might vary please check with your ISP for the correct username.



Step 16 Click on the **Next** icon.



Step 17 Click on the **Restart** icon.

Step 18 You will see that the DSL-G604T is restarting. Please allow one minute of waiting time for the restart process.



Step 19 Lastly, click on the close button to return to the Web Browser configuration.